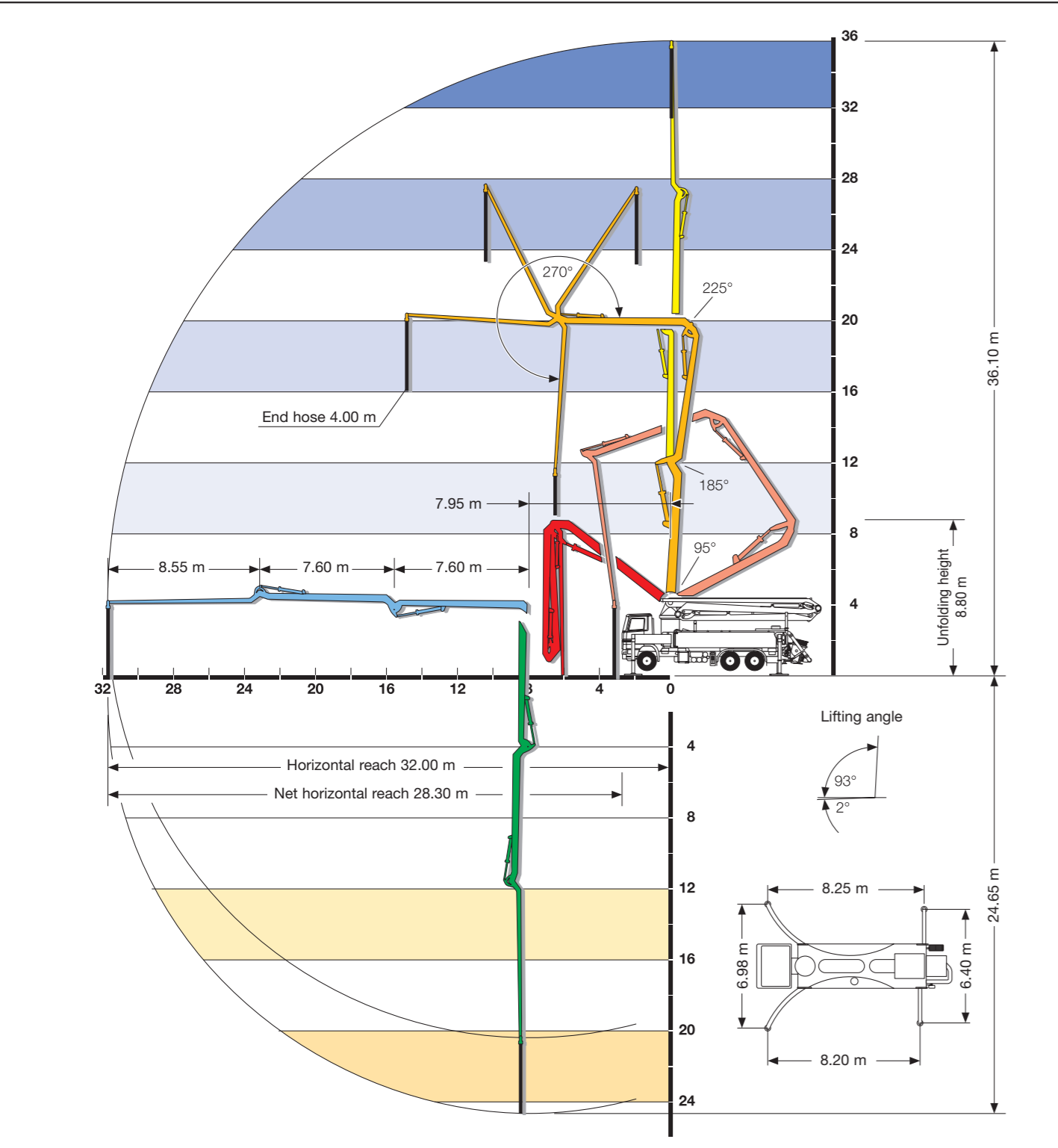
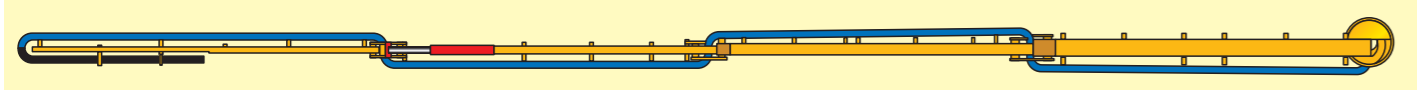


S 36 SX, 4-section Z roll and fold system, height 36 m, all purpose application. SX-H-stabilizing system, supporting width only 6.98m.

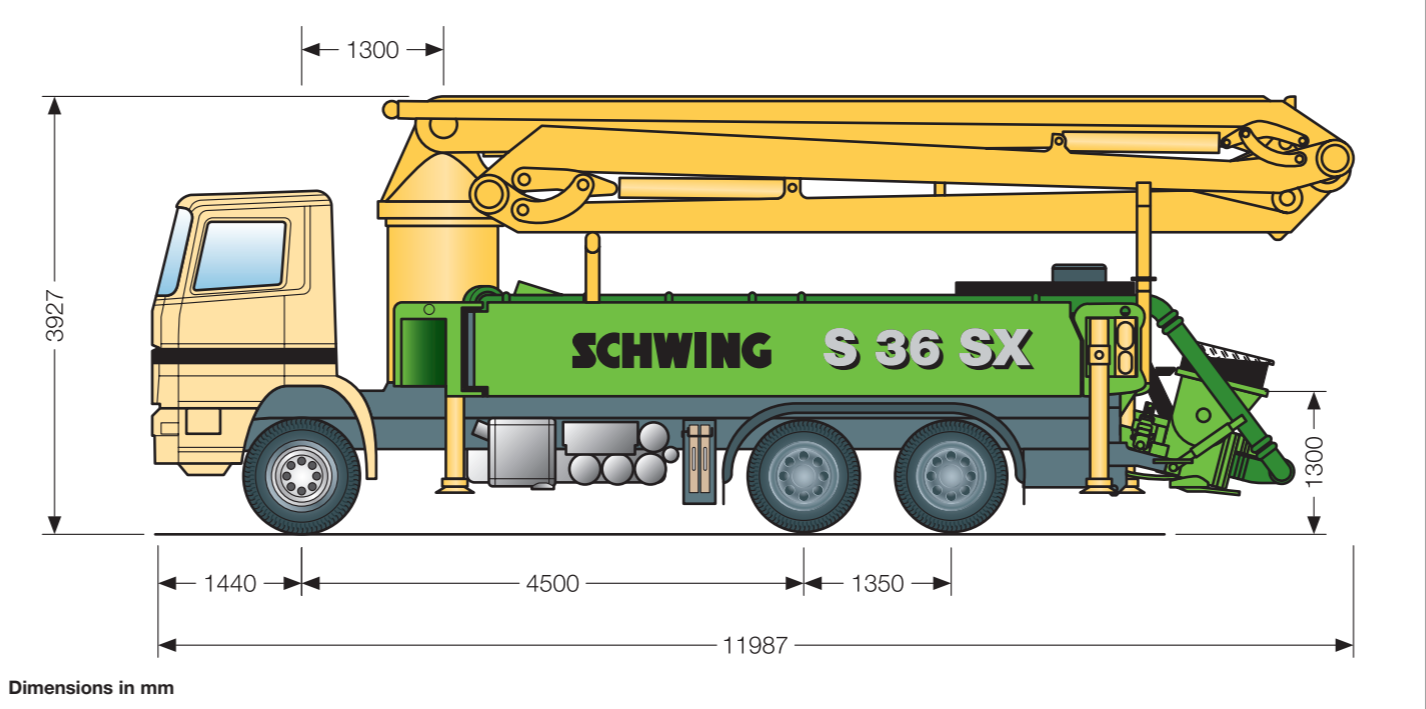


Amazing view from above!



Technical Data

Concrete pump				Placing boom	
Type		P 2023	P 2525	P 2525	36 RZ
Max. pumping output	m³/h	163	161	163	DN 125
Max. number of strokes	min	32	27	22	4,0
Max. concrete pressure	bar	85*	85*	85*	36,1
*) max. 85 bars through boom line					
Max. pumping output and max. pumping pressure cannot be achieved at the same time					
				Horiz. reach from center of slewing axis	
				m	
				32,0	
				Number of articulations	
				4	
				Height of articulations	
				m	
				4,1 / 12,05 / 19,65 / 27,25	
				Lifting angle	
				95°	
				1 st folding angle	
				185°	
				2 nd folding angle	
				225°	
				3 rd folding angle	
				270°	
				Slewing range	
				2 x 360°	



SCHWING SCHWING GmbH
 P.O. Box 200362
 D-44647 Herne/Germany
 ☎ +49 (0)2325/987-0
 ☎ +49 (0)2325/72922
 E-Mail: info@schwing.de
 http://www.schwing.de

Subject to modifications in the interest of technical progress. The exact standard scope of delivery is detailed in the offer.

Truck-mounted concrete pump

S 36 SX



SCHWING S 36 SX, SCHWING has developed another technical highlight in the market segment of medium-sized truck-mounted concrete pumps!

Truck-mounted concrete pumps of this size, e.g. the 3-axle class up to 26 tons deal with the bulk of the hard routine work every day. Diligent as usual, the SCHWING engineers have designed the S36 SX with a focus on quality and practical application. The characteristic component is the unique SCHWING arc-shaped stabilizing system. Its special constructive feature provides sufficient space for the long-stroke units and an ideal arrangement of the other modu-

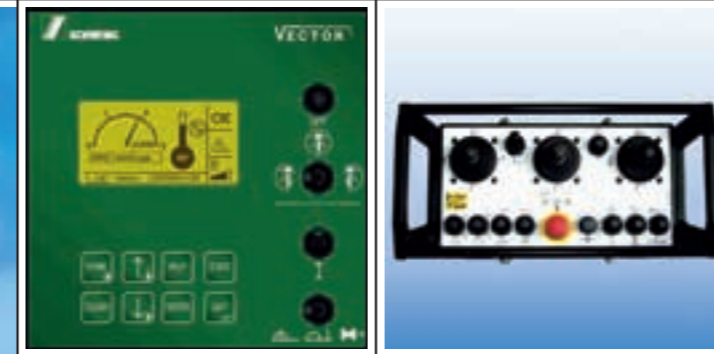
les. The result is the compact "SCHWING-typical" slim silhouette of the maintenance-friendly machine design. The chief attraction of this concrete pump, however, is the optimized placing boom 36 RZ. The Z-roll and fold system extends the possibilities of the 36 m operating range thanks to the improved mobility of the C-joint with its 225° and thanks to the flyer (D-joint) with its 270° drive. But the placing boom can boast another striking charac-

teristic. A production technology especially developed by SCHWING as well as a pipeline running extremely close to the boom makes it possible for the placing boom to do without the otherwise required offset with crossing pipelines. In other words: in case of the 36 RZ, the stretched boom elements lie on a straight line making the expression "good slipping in and out characteristics" a readily understood concept. Optionally, the S 36 SX can also

be equipped with a useful component: the hinged feeder hose box on the left side. This has the advantage for the operator that he can conveniently store 35 m of hoses (DN 65) in drawers and carry them along. They are easily taken out and stowed from the ground. Additional extra equipment such as the one-sided stabilizing system "EASY", the concrete stop valve at the end hose or the automatic lighting system perfectly top off the practical suitability of this machine.

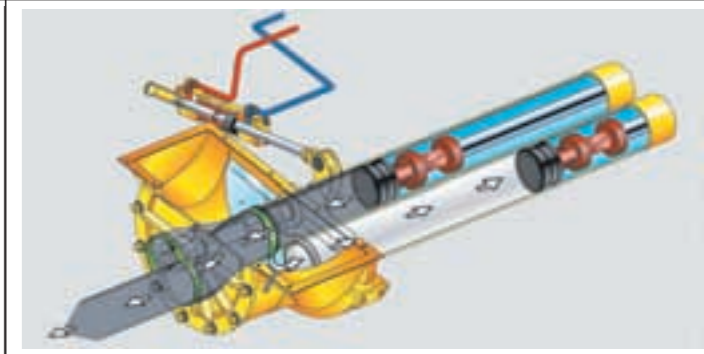
A further step towards simplifying the operation and maintenance of the S 36 SX in everyday's site work is the Vector Control. Thanks to this electronic "brain" of the SCHWING truck-mounted concrete pumps, operators can always communicate with their machines, check operation data and collect machine state data. An outstanding feature of this system is its graphic display with plain-text menu assistance.

The radio remote control is equipped with 3 joysticks for the placing boom and for all functions of the concrete pump and the auxiliary units including an EMERGENCY STOP. Its radio control receiver is moreover equipped with a "forget-me-not" warning function.

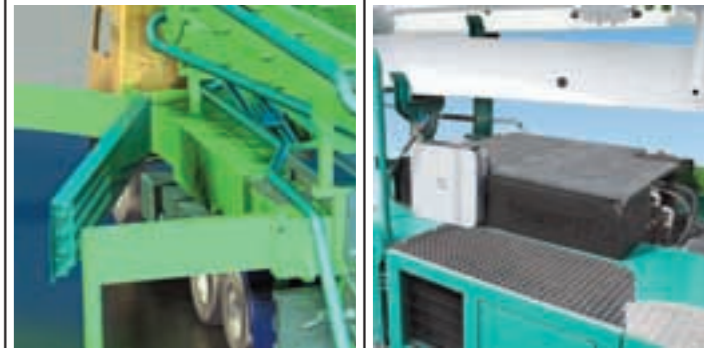


The concrete pump The generously dimensioned long-stroke concrete pump unit with the Rock valve is the strong heart of this machine. The open oil circuit and the hydraulic components are designed for continuous round-the-clock operation. The low stroking frequency of this pump with nonetheless high delivery rates is the reason for the considerably reduced fuel consumption, for less

wear and for a quiet end hose during pumping operations. And last not least, the Rock valve: patented in almost all industrial countries and well-known for its extraordinary pumping characteristics, reliability and resistance to wear. In conjunction with the above-mentioned savings potential, the Rock valve guarantees best results when it comes to calculating the costs for each cubic meter of pumped concrete.



Optionally, the S 36 SX can be equipped with a useful component: the hinged feeder hose box. >



>> Large heatable water tank (850l) has been combined with the entire water and cleaning system to provide a single dimensional framework.

> Due to the optimal mobility of the C-joint with 225° and of the D-joint with its 270° drive, the SCHWING placing boom 36 RZ combines maximum depth of penetration with minimum distance from the building. The fact that the boom can be threaded into buildings through even the narrowest openings without touching the structure is an additional safety asset for the operator.

