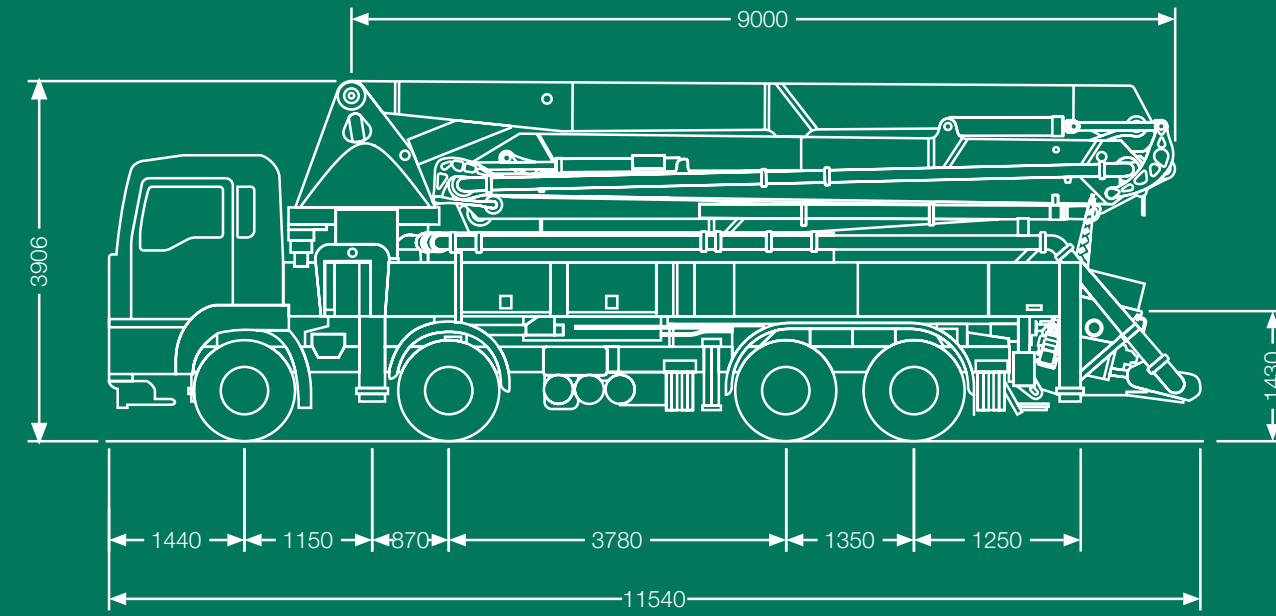
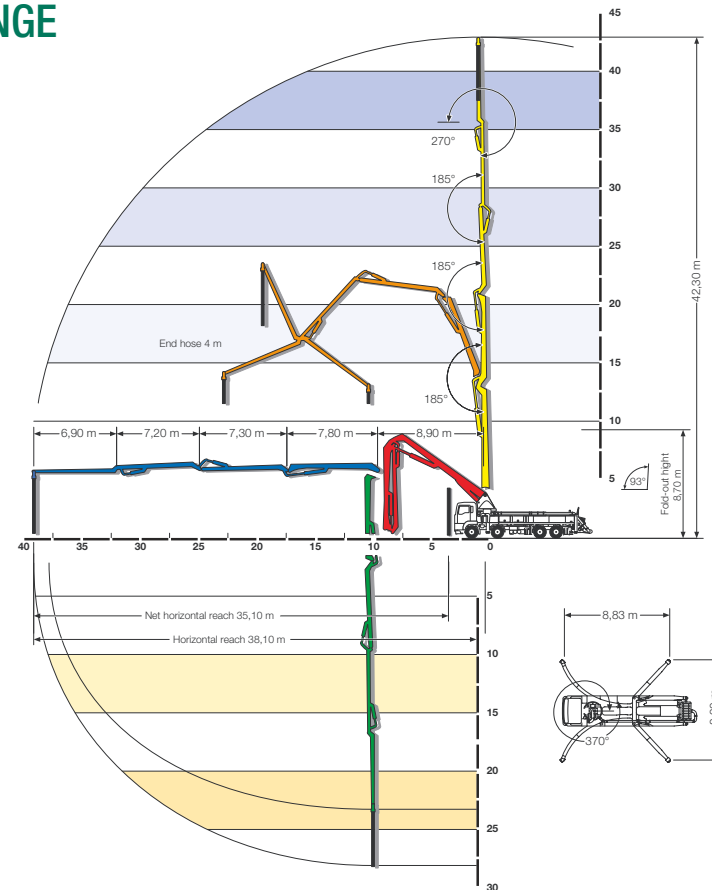


TECHNICAL DATA

| Pump battery | | P 2023 | P 2025 | P 2525 |
|-------------------------|-------------------|------------------------------|--------|--------|
| Max. theor. output | m ³ /h | 164 | 163 | 164 |
| Max. number of strokes | min. | 32 | 27 | 22 |
| Max. concrete pressure | bar | 85 | 85 | 85 |
| Placing boom | | | | |
| | | 43 RZ | | |
| Delivery line diameter | | DN 125 | | |
| Length of end hose | m | 4,0 | | |
| Vertical reach | m | 42,3 | | |
| Horizontal reach | m | 38,1 | | |
| Number of articulations | | 5 | | |
| Height of articulations | m | 4,16 / 13,05 / 20,80 / 28,11 | | |
| Slewing range | | 2 x 370° | | |
| Outrigger load, front | kN | 240 | | |
| Outrigger load, rear | kN | 230 | | |

WORKING RANGE

S 43 S X



TRUCK-MOUNTED CONCRETE PUMP S 43 SX



SCHWING-STETTER MOVES CONCRETE. WORLDWIDE.

Wherever concrete is produced and moved is where you will find Schwing-Stetter machinery.

With plants in Germany, Austria, USA, Brazil, Russia, China and India as well as with more than 100 sales and service facilities, the group of companies is always close to the customer.

Our wide range of products with something for every application is what makes Schwing-Stetter the No. 1 system supplier for concrete machinery worldwide.



SCHWING GMBH
P.O. Box 20 03 62 · D-44647 Herne / Germany
Phone (0) 23 25 / 9 87-0 · Fax (0) 23 25 / 7 29 22
www.schwing.de · info@schwing.de

Subject to modifications in the interest of technical progress. The exact standard scope of delivery is detailed in the offer.

10311084.2000.04.10SK



SCHWING TRUCK-MOUNTED CONCRETE PUMP S 43 SX

DESIGNED FOR CUSTOMER BENEFIT

SCHWING redefines standards in the 40 m class with its S 43 SX truck-mounted concrete pump. The combination of a 5-section R-Z placing boom, space-saving curved outriggers in connection with a consistently lightweight design makes this machine a universal and flexible long-boom pump – both for medium-sized operations in downtown urban areas and on large construction sites.

With an overall length of less than 12 m on a standard chassis this compact boom package does not extend beyond the machines outlet.

Only SCHWING makes concrete pumps with a Z-fold where it gives the greatest benefit: at the last boom section. The fifth element of the boom has a 270° knuckle. This is the only configuration that guarantees maximum flexibility and a large reach with excellent slip and threading properties at the same time.

The boom can be overextended by 3° and has a bending angle of 95° at the first boom joint, and 185° at the second and third joint. This makes it possible to dip even into the narrowest niches of the building. The folding system enables concreting work right up to the vehicle bumper. And as far as the boom length itself is concerned, the S 43 SX offers users a wider variety of options with a reach height of 42.10 m.

The concrete pump line was arranged in such a way that it follows the neutral zone of the boom sections. As a result, it is not subjected to tension and pressure whenever the boom moves. Because the pump line changes from the left to the right side after the third section, no transverse forces are applied to the boom segments even when the line is full of concrete. The pipe holders can thus be kept short, preventing the formation of cracks and enabling exceptionally minimal spacing between the pump line and each individual boom section.

The ratio between load moment, operating weight and outrigger spread – as is generally known, the latter is the decisive factor for the footprint of a truck-mounted concrete pump on the construction site – is optimally balanced in all SCHWING concrete pumps.

Where conventional machines can only be set up with elaborate multiple telescoping or folding outriggers, the S 43 SX employs the SCHWING SX outrigger system. The front outriggers extend along an arc, do not have to be swiveled or telescoped and can fit into even the smallest gaps at the construction site thanks to their low height – that saves space and time. In EASy mode and short rigged the S 43 SX can be operated with a radius of 140°. In this case support is only provided on the side facing the work area. The two outriggers on the opposite side do not have to be extended. This results in an extremely low outrigger spread of approx. 5.20 m, an invaluable advantage that ensures, for example, that traffic is not impeded by concreting work on the road.

This truck-mounted concrete pump also sets new standards in occupational safety. Based on its design, the placing boom of a conventional machine of this size can only slew 360° in one direction and therefore has to be manually moved to the working position through the prohibited working area – depending on the previous resting position. This means the responsibility lies on the operator's shoulders.

The S 43 SX has a slewing range of 370° to both sides. In connection with its sensory system, the operator has no way of moving the boom into a prohibited work range area. The machine has both an operating and a safety limit switch as a double safeguard for the slewing angle and any operator mishap.

The deck line, for which only standard bends and pipes are used, is user- and maintenance-friendly thanks to easy accessibility via the base frame structure. In addition, SCHWING does without expensive and long special bends, as those used in conventional truck-mounted concrete pumps for pipe line entry into the turret. Thanks to a large opening, the turret is easily accessible for servicing purposes and enables changing of the riser pipe without any complications.

Since the holding boxes for the curved outriggers do not cross in the base frame, but run along the side, the middle of the base frame is kept clear. This means space is available for long-stroke pump kits with stroke lengths of 2.50 m that require 23% fewer strokes compared to conventional short-stroke pump cylinders. Furthermore, short-stroke pumps can only effectively utilize part of the given stroke for system-related reasons. 23% fewer strokes with the S 43 SX mean 23% fewer changeovers of the concrete valve and thus minimal wear and energy costs for the operator.

The clear space in the middle of the frame additionally provides for good accessibility to all hydraulic pumps and hoses for easy maintenance.

The torsion resistant frame design where the pivot point for the outriggers are far to the rear of the machine ensures that all forces are reliably transferred into the ground via the outriggers. All outrigger cylinders operate in a square tube system so that the cylinders and the piston rods are protected against mechanical damage and not subjected to any buckling forces. Even if cylinder replacement were necessary, this could be done without having to dismantle the complete unit.

The large water tank in the rear outrigger, ample stowage space, easily accessible storage areas, folding steps and a wide range of extras leave nothing to be desired in the S 43 SX.



Time and space savers - the SX outriggers extend fast without telescoping or pivoting and fits into the tightest spaces.



Only the SX outriggers allow enough room to install a long stroke pump kit. That means less change overs and less wear for better economy.



The operator can check all operating pressures with one glance. Compressor, water system, and maintenance switch for the piston change mode within easy reach.



The available space in the main frame makes for easy accessibility to the hydraulic components and hoses.



Clear and orderly - all important functions are ready to use and protected against moisture - even the docket stays dry.