

# S 47 SX III

## Truck-mounted concrete pump



**MADE IN GERMANY**  
by SCHWING-Stetter 

Vertical reach		46.10 m
Concrete output	max.	162 m <sup>3</sup> /h
Pressure on concrete	max.	85 bar
Curb weight		approx. 31 t / < 68,340 lb



RECORD BREAKING ENGINEERING



## The S 47 SX III from SCHWING

# Performance has never been easier

Large range, low weight, compact outrigger widths and straightforward operation: the new S 47 SX III from SCHWING offers everything you need to ensure maximum efficiency and safety during concrete placement. The intuitive operation of the 5-section roll-folding boom system and the exceptionally large opening angles at stages 4 and 5 optimise the practical applications and therefore utilisation. Owing to the various EASy Flex support possibilities, the S 47 SX III requires far less space than before. Thanks to its low curb weight of slightly more than 31 tons and COC documentation supplied ex works, a legal permit for the S 47 SX III can be quickly obtained in all European countries. The S 47 SX III from SCHWING: rugged lightness for maximum range and excellent performance capability.

# The S 47 SX III from SCHWING

## Advantages and benefits at a glance

### Pumpkit

Only the SX outriggers by SCHWING allows the longstroke pump kit P2525 with 2.50 m long pumping cylinders to be used in this class of machine. Advantages: even smoother operation and 15% less strokes than other pump kits available in this class.



### Open hydraulic system

The open hydraulic system of the S 47 SX III converts the engine power efficiently into pump power with little loss. Thus, typical output rates can be achieved with a fuel-saving engine speed of just over 1000 rpm.



### Boom

Thanks to the easy to operate roll-folding system and large opening angles of the boom stages 4 (210°) and 5 (215°), the S 47 SX III is extremely flexible and safe during operation. Further benefits are the low unfolding height of just 9.80 m and large slewing range of 2 x 365°. To increase safety when pumping and to minimise the danger of blockages, only standard elbows with a large radius and camber of 275 mm are used with the boom pipes of the S 47 SX III.



### SX outriggers

The single section SX outriggers developed by SCHWING combine high torsional rigidity and excellent stability with minimum space requirement. The protected piston rod and internally laid hydraulic lines prevent damage and reduce service costs.



### Concrete valve

Thanks to its intelligent design, the ROCK valve suffers significantly less wear and tear than other concrete valves. It is also quick to clean and is demonstrably easier to maintain. The advantages for the S 47 SX III: shorter servicing times, higher machine uptime and lower maintenance costs.



### Supply control

The water box can be filled and emptied, and the water pump, agitator, spray hose, high pressure cleaner and compressor, all controlled via the standardised supply control. This is the standard for all SCHWING truck-mounted concrete pumps for greater clarity and ease of operation.



### Remote control SC 30

The light weight, easy to use and comfortable SC 30 helps minimise fatigue, allowing the operator to focus on the job for extended periods. The powerful batteries guarantee an operating time of at least 8 hours.



### VECTOR Control

The machine operator can inspect machine data, operating conditions and settings on S 47 SX III, changing various parameters, all through the intuitive VECTOR control. The integrated diagnostic system ensures safe operation and also reminds the operator when maintenance is necessary.



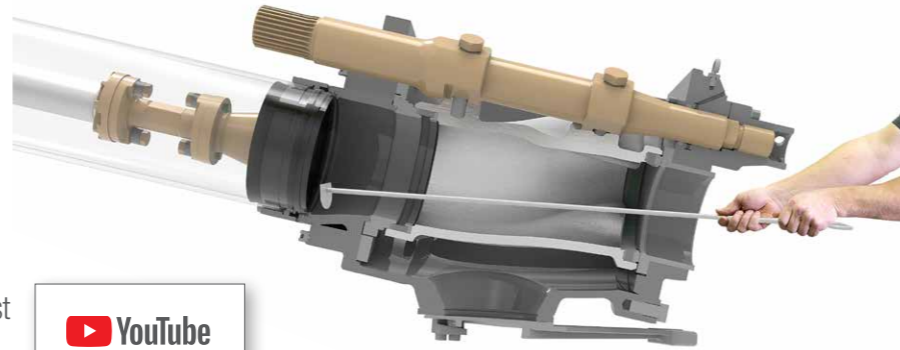
## S 47 SX III Truck-mounted concrete pump

# Advantages and benefits in detail

### The ROCK

#### Clean faster with less water.

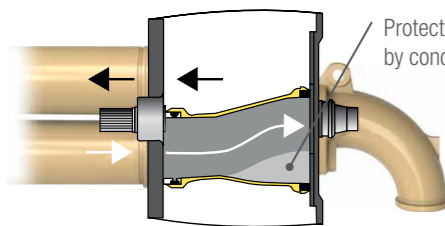
Due to its straight design, in comparison to other concrete valves, the ROCK valve is easier and quicker to clean. It also provides a direct view of the pumping pistons in the delivery cylinder. The pump kit can therefore be cleaned easily and conveniently within just two strokes. This saves water and reduces the time needed for cleaning.



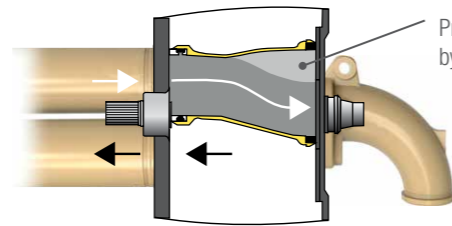
 **YouTube**  
SCHWING-Stetter  
**Tutorial 02**

#### Intelligent wear protection.

The wear in the concrete valve is particularly high as the concrete is fed into the outlet at high pressure. In order to minimize this wear, at the most heavily loaded point of the ROCK concrete does not rub on steel, but rather on concrete. This is because the intelligent design of the ROCK leads to the formation of a concrete triangle after each shift. Protected by this concrete layer, the ROCK has a significantly longer service life than other concrete valves. For noticeably more profit per m<sup>3</sup>.



Protection of the ROCK inside by concrete triangle



Protection of the ROCK inside by concrete triangle

#### Easy maintenance.

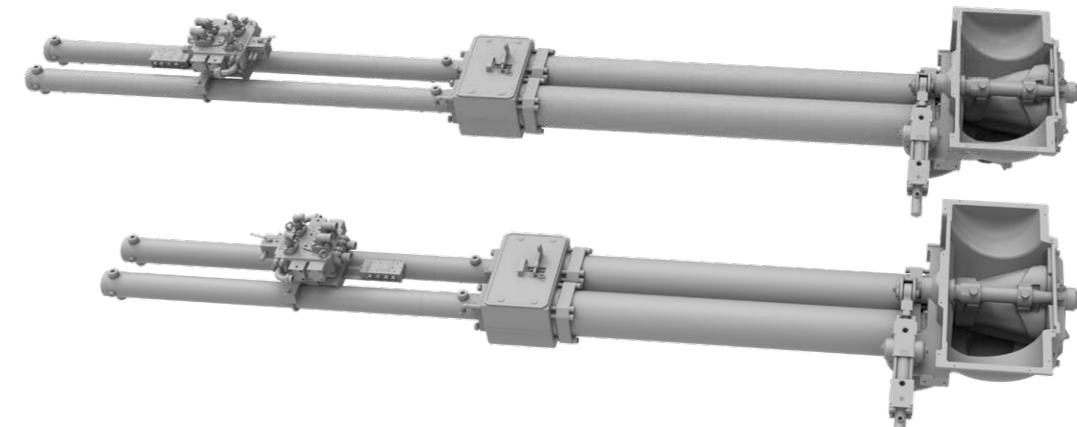
The ROCK valve not only has a significantly longer service life than other concrete valves, it is also easier to maintain. After removing the housing cover, the wear parts are easily accessible and can be replaced quickly and safely. Time-consuming adjustment work is not required after replacement. The ROCK valve's 15 wearing parts is only half the number used in other concrete valves. The maintenance of the ROCK valve: simple, fast and safe.



### The long-stroke pump kit P2525

#### Less wear, more profit.

Only the SX outriggers from SCHWING enables the installation of a pump kit with 2.50 m long delivery cylinders in this class. For a standard practice delivery rate of almost 60 m<sup>3</sup>/h, the long stroke pump kit P2525 requires no more than 8 strokes per minute. The wear costs of the S 47 SX III are thus reduced to an unrivaled low level and ensure significantly more profit per m<sup>3</sup>.



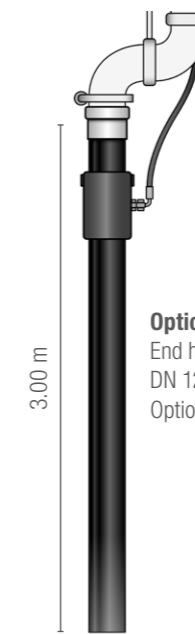
P2525 with  
2.50 m long  
delivery cylinders

Pumpkit with  
2.00 m long  
delivery cylinders

### The end hose

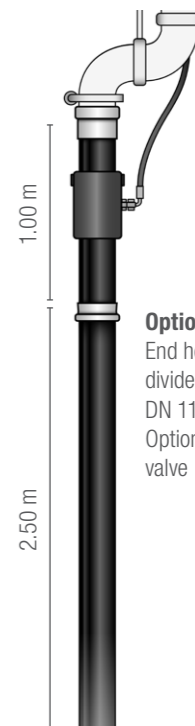
#### Two variants for more flexibility.

There are two different end hose versions available to select from for the S 47 SX III. Ex works a 3.00 m long end hose DN 125 is used. More flexibility is provided upon request with the 3.50 m long, divided end hose (1.00 + 2.50 m) with DN 112. Both hose versions can be equipped with a concrete shut-off-valve.



3.00 m

**Option**  
End hose 3.00 m  
DN 125  
Option: Concrete shut-off-valve



1.00 m

2.50 m

**Option**  
End hose 3.50 m,  
divided (1.00 + 2.50 m)  
DN 112  
Option: Concrete shut-off-  
valve

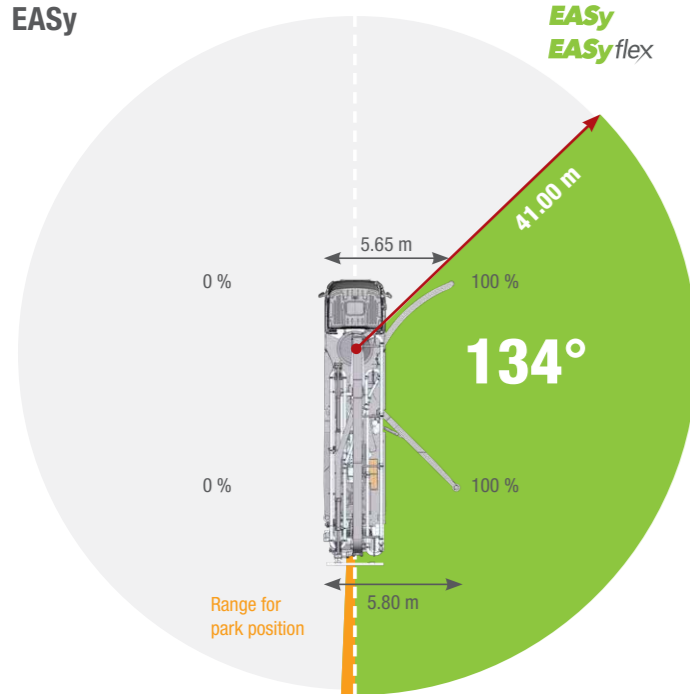
## EASy and EASyflex

The outrigger systems EASy and EASyflex extend the range of applications of the S 47 SX III. With EASy, the concrete pump can be safely supported on one side, if required, whilst covering a working range of 134°. EASyflex provides further outrigger combinations and as such, more flexibility on the jobsite. In this way, pump applications can be achieved with maximum working safety even in difficult, restricted spaces. More flexibility for more safety.

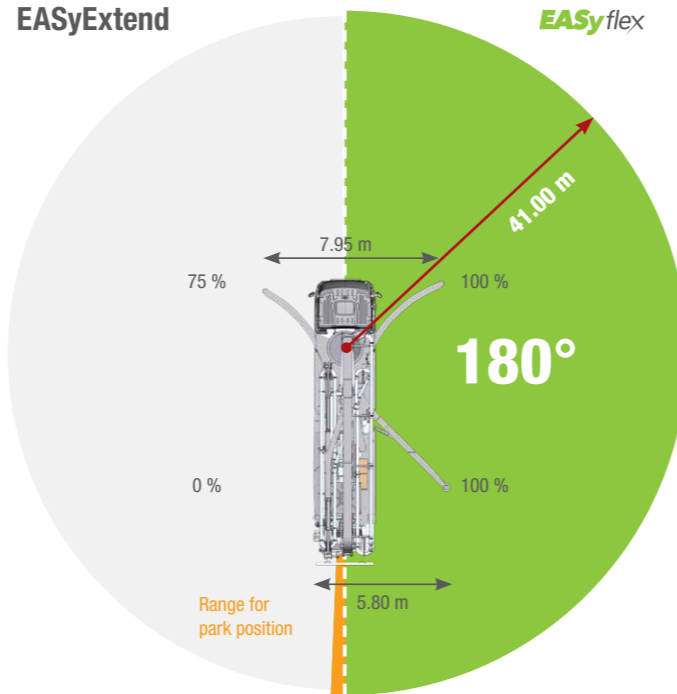
## S 47 SX III Truck-mounted concrete pump

# Working range

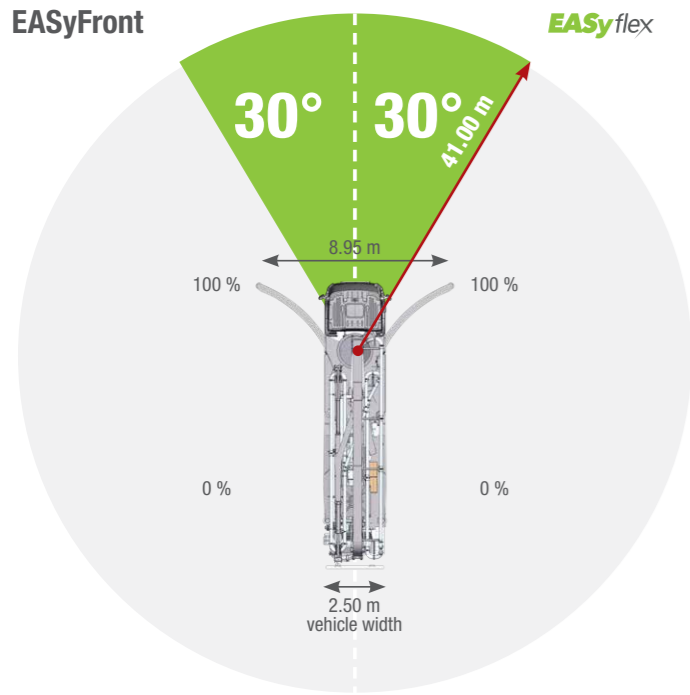
EASy



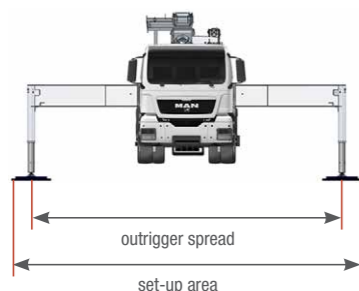
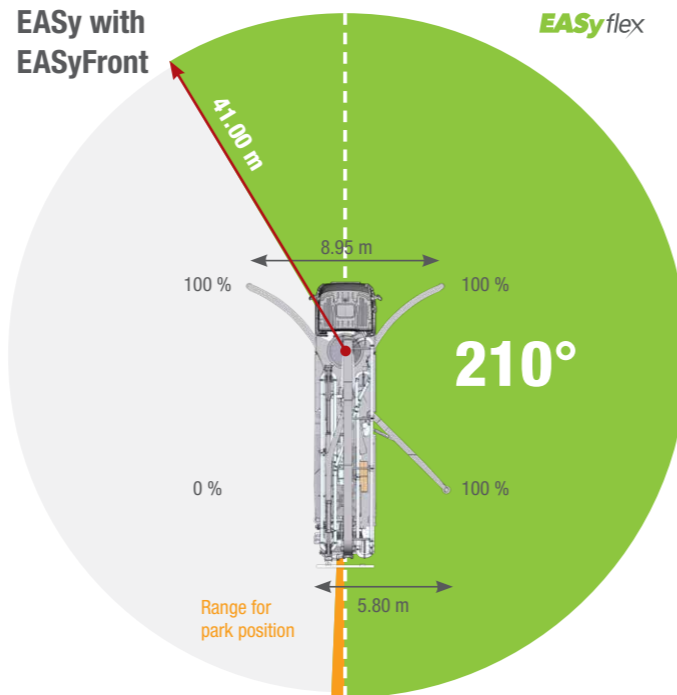
EASyExtend



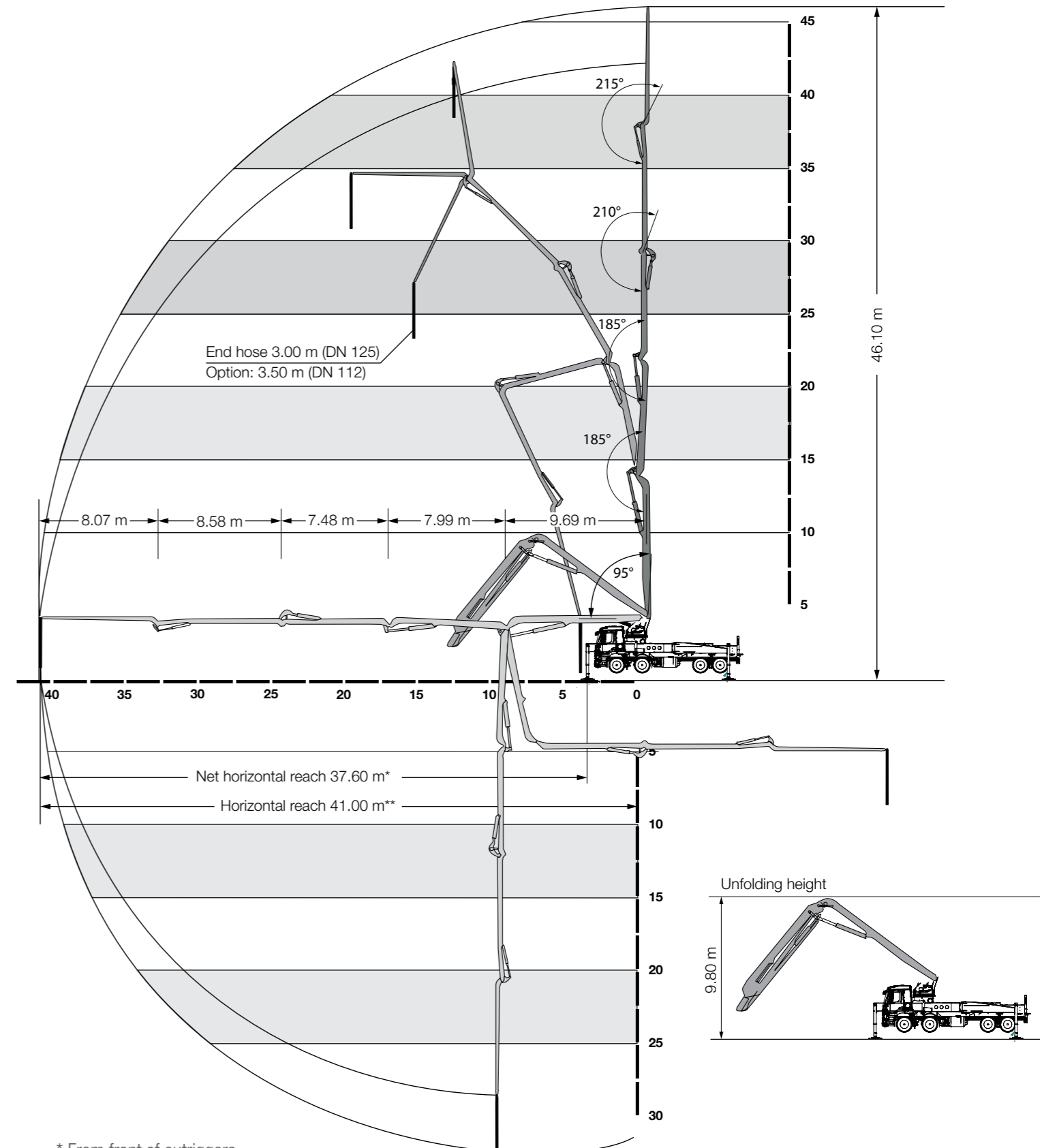
EASyFront



EASy with EASyFront



The outrigger spreads as specified are measured from the centre of the outrigger leg. Any cribbing or underlay timbers must be taken into account when determining the required set-up area.



\* From front of outriggers

\*\* From centre of turret

## S 47 SX III Truck-mounted concrete pump

# Technical data

### Performance

Pump kit		P2023-110/75	P2525-120/85
Drive	l/min	636	636
Delivery cylinders	mm	230 x 2,000	250 x 2,500
Concrete output max.	m <sup>3</sup> /h	161	162
Pressure on concrete max.	bar	85	85
Stroke rate max.	1/min.	32	22
Concrete valve		B-ROCK	B-ROCK

### Hydraulic system

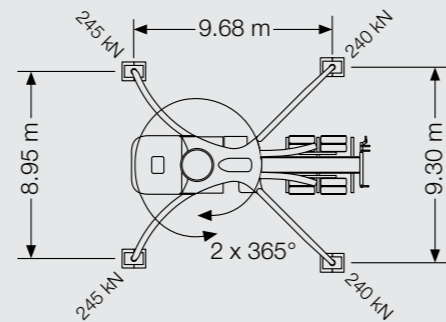
Design		open system
Hydraulic tank	l	480

### Boom 47 R

Delivery line		DN 125
Length of end hose	m	3.00 with end hose DN 125 / 3.50 (1.00 + 2.50) with end hose DN 112
Vertical reach	m	46.10
Reach depth	m	32.40
Horizontal reach	m	41.00 (from centre of turret)
Net horizontal reach	m	37.60 (from front of outriggers)
Number of boom sections		5
Height of the inflexion points	m	4.30 / 14.00 / 22.00 / 29.50 / 38.00
Slewing range		2 x 365°
Folding height	m	9.80

### Support

Outrigger width, front	m	8.95
Outrigger width, rear	m	9.30
Outrigger load, front	kN	245
Outrigger load, rear	kN	240

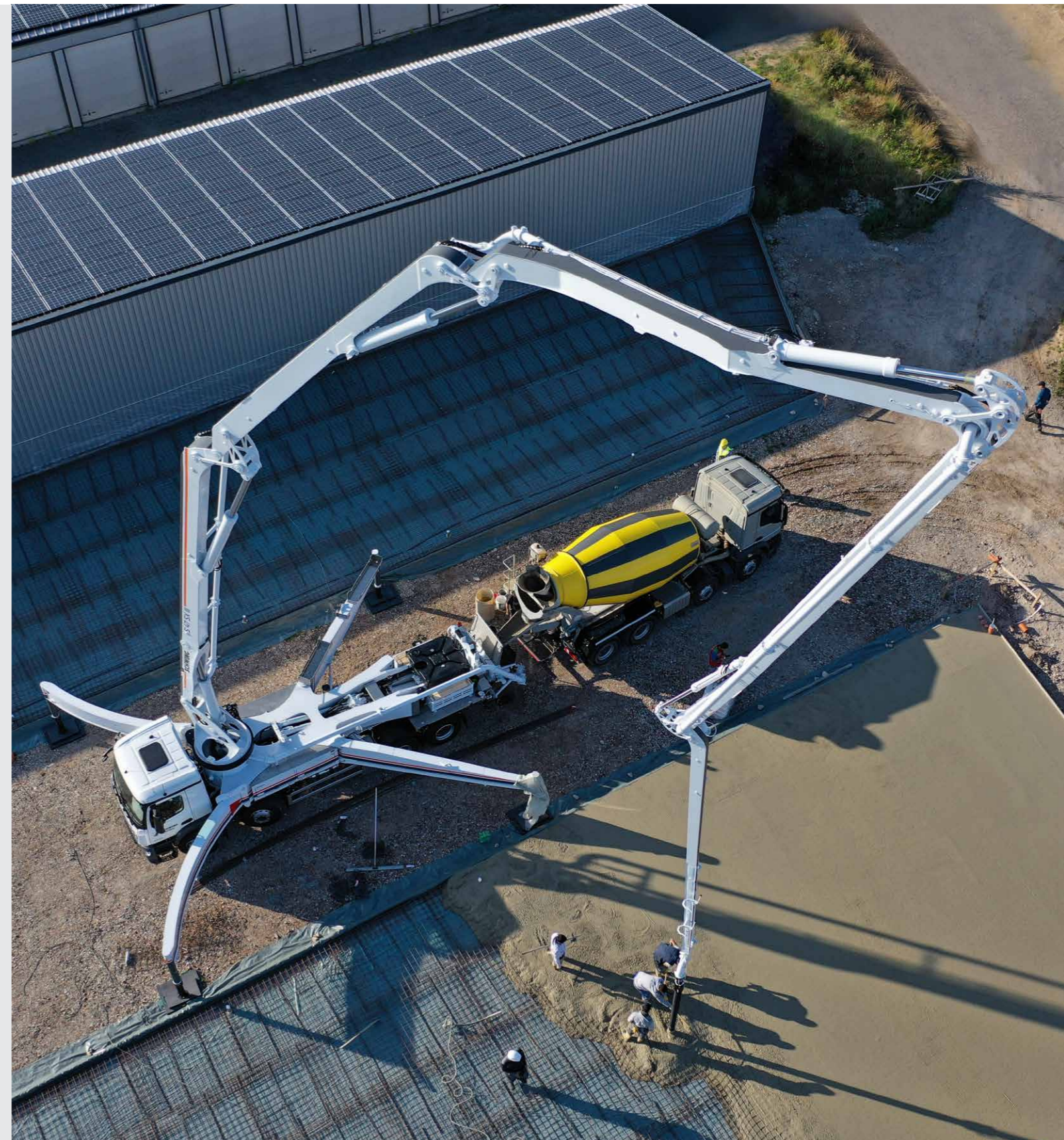


### Chassis (examples\*)

		Mercedes-Benz Arocs 3546	MAN TGS 35.420
Axles configuration		8x4	8x4
Wheelbase	mm	5,750	5,750
Length	mm	11,880 / 11,850	11,840 / 11,810 (with / without underride guard)

### Miscellaneous

Water tank	l	610
------------	---	-----



\*Can be mounted on different chassis frames



schwing-stetter



schwing.stetter



S 47 SX III



SCHWING concrete pumps. Efficiency as standard.



**SCHWING  
Stetter**

SCHWING GmbH  
Heerstrasse 9-27 · 44653 Herne, Germany  
Phone +49 23 25 - 987-0 · Fax +49 23 25 - 72922  
www.schwing-stetter.com · info@schwing.de

Stetter GmbH  
Dr.-Karl-Lenz-Strasse 70 · 87700 Memmingen, Germany  
Phone +49 83 31 - 78-0 · Fax +49 83 31 - 78 275  
www.schwing-stetter.com · info@stetter.de

Subject to technical and dimensional modifications. Illustrations are non-binding. The exact standard specification, the scope of delivery and the technical data are detailed in the offer.