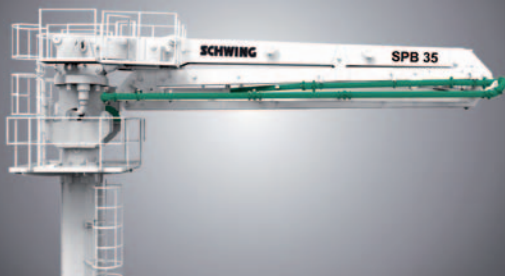


# STATIONARY CONCRETE PUMPS SEPARATE PLACING BOOMS

Overview



# CONTENTS

## STATIONARY CONCRETE PUMPS

06	SP 305
07	SP 500
08	SP 750
09	SP 1000
10	SP 1800
11	SP 2800
12	SP 3500
13	SP 3800
14	SP 4800
15	SP 8800
16	SP 8800 Container



## SEPARATE PLACING BOOMS

24 | 25 SBP 25

26 | 27 SBP 27 T

28 | 29 SBP 28

30 | 31 SBP 32

32 | 33 SBP 32





CONCRETE BATCHING PLANTS



TRUCK MIXERS



TRUCK-MIXER PUMPS



TRUCK-MOUNTED CONCRETE PUMPS



STATIONARY CONCRETE PUMPS



SEPARATE PLACING BOOMS



CONCRETE-RECYCLERS



SLUDGE PUMPS

## SCHWING-STETTER MOVES CONCRETE. **WORLDWIDE.**

Wherever concrete is produced and moved is where you will find Schwing-Stetter machinery.

With plants in Germany, Austria, USA, Brazil, Russia, China and India as well as with more than 100 sales and service facilities, the group of companies is always close to the customer.

Our wide range of products with something for every application is what makes Schwing-Stetter the No. 1 system supplier for concrete machinery worldwide.



## TECHNICAL DATA

		SP 305	
Type		D-125 x 750	E-125 x 750
Performance			
Output	m <sup>3</sup> /h	23	23
Pressure	bar	44	43
Strokes	/min	40	40
Installed output	kW	37	30
Weight, approx.	kg	1.655	1.500

*Performance data is max. theoretical  
(Max. output and max. pressure cannot be achieved simultaneously.)*



## TECHNICAL DATA

		SP 500	
Type		D-150 x 1000	E-150 x 1000
Performance			
Output	m <sup>3</sup> /h	34	35
Pressure	bar	76	76
Strokes	/min	32	32
Installed output	kW	60	55
Weight, approx.	kg	2.950	2.450

*Performance data is max. theoretical  
(Max. output and max. pressure cannot be achieved simultaneously.)*



## TECHNICAL DATA

		SP 750	
Type		D-180 x 1000	D-150 x 1000
Performance			
Output	m <sup>3</sup> /h	53	38
Pressure	bar	76	76
Strokes	/min	35	35
Installed output	kW	75	75
Weight, approx.	kg	3.400	3.000

		E-180 x 1000	E-150 x 1000
Performance			
Output	m <sup>3</sup> /h	53	38
Pressure	bar	76	76
Strokes	/min	35	35
Installed output	kW	55	55
Weight, approx.	kg	3.340	3.220

*Performance data is max. theoretical  
(Max. output and max. pressure cannot be achieved simultaneously.)*



## TECHNICAL DATA

		SP 1000
Type		D-180 x 1000
Performance		
Output	m <sup>3</sup> /h	54
Pressure	bar	76
Strokes	/min	35
Installed output	kW	104
Weight, approx.	kg	3.438

*Performance data is max. theoretical  
(Max. output and max. pressure cannot be achieved simultaneously.)*



## TECHNICAL DATA

		SP 1800	
Type		D-200 x 1600	E-200 x 1600
Performance		S / K	S / K
Output	m <sup>3</sup> /h	73 / 42	73 / 42
Pressure	bar	60 / 108	60 / 108
Strokes	/min	24 / 14	24 / 14
Installed output	kW	126	90
Weight, approx.	kg	5.140	5.000

*S = rod sided, K = piston sided*

*Performance data is max. theoretical*

*(Max. output and max. pressure cannot be achieved simultaneously.)*



*SP 1800 und SP 2800 also available on tracks*



## TECHNICAL DATA

		SP 2800	
Type		D-200 x 1600	E-200 x 1600
Performance		S / K	S / K
Output	m <sup>3</sup> /h	101 / 58	101 / 58
Pressure	bar	60 / 108	60 / 108
Strokes	/min	33 / 19	33 / 19
Installed output	kW	147	132
Weight, approx.	kg	5.200	5.000

*S = rod sided, K = piston sided*

*Performance data is max. theoretical*

*(Max. output and max. pressure cannot be achieved simultaneously.)*



## TECHNICAL DATA

		SP 3500	
Type		D-200 x 1600	E-200 x 1600
Performance		S / K	S / K
Output	m <sup>3</sup> /h	95 / 58	95 / 58
Pressure	bar	81 / 137	81 / 137
Strokes	/min	24 / 14	24 / 14
Installed output	kW	181	160
Weight, approx.	kg	7.000	7.000

		D-180 x 2000	E-180 x 2000
Type		S / K	S / K
Performance		S / K	S / K
Output	m <sup>3</sup> /h	78 / 48	75 / 48
Pressure	bar	100 / 169	100 / 169
Strokes	/min	24 / 14	24 / 14
Installed output	kW	181	160
Weight, approx.	kg	7.000	7.000

*S = rod sided, K = piston sided*

*Performance data is max. theoretical*

*(Max. output and max. pressure cannot be achieved simultaneously.)*



### TECHNICAL DATA

		SP 3800	
Type		D-200 x 2000	E-200 x 2000
Performance		S / K	S / K
Output	m <sup>3</sup> /h	95 / 58	95 / 58
Pressure	bar	81 / 137	81 / 137
Strokes	/min	24 / 14	24 / 14
Installed output	kW	190	160
Weight, approx.	kg	7.500	7.200

		D-180 x 2000	E-180 x 2000
Type		D-180 x 2000	E-180 x 2000
Performance		S / K	S / K
Output	m <sup>3</sup> /h	78 / 48	75 / 48
Pressure	bar	100 / 169	100 / 169
Strokes	/min	24 / 14	24 / 14
Installed output	kW	190	160
Weight, approx.	kg	7.500	7.200

*S = rod sided, K = piston sided*

*Performance data is max. theoretical*

*(Max. output and max. pressure cannot be achieved simultaneously.)*



## TECHNICAL DATA

		SP 4800	
Type		D-180 x 2000	E-180 x 2000
Performance		S / K	S / K
Output	m <sup>3</sup> /h	66 / 43	66 / 43
Pressure	bar	156 / 243	156 / 243
Strokes	/min	21 / 14	21 / 14
Installed output	kW	330	200
Weight, approx.	kg	8.000	8.000

		D-200 x 2000	E-200 x 2000
Performance		S / K	S / K
Output	m <sup>3</sup> /h	81 / 53	81 / 53
Pressure	bar	104 / 163	104 / 163
Strokes	/min	21 / 14	21 / 14
Installed output	kW	330	200
Weight, approx.	kg	8.000	8.000

*S = rod sided, K = piston sided*

*Performance data is max. theoretical*

*(Max. output and max. pressure cannot be achieved simultaneously.)*



## TECHNICAL DATA

		SP 8800	
Type		D-180 x 2000	E-180 x 2000
Performance		S / K	S / K
Output	m <sup>3</sup> /h	94 / 63	91 / 60
Pressure	bar	156 / 243	156 / 243
Strokes	/min	31 / 21	31 / 21
Installed output	kW	440	2 x 200
Weight, approx.	kg	10.000	10.000

		SP 8800	
Type		D-200 x 2000	E-200 x 2000
Performance		S / K	S / K
Output	m <sup>3</sup> /h	116 / 77	112 / 74
Pressure	bar	104 / 163	104 / 163
Strokes	/min	31 / 21	30 / 20
Installed output	kW	440	2 x 200
Weight, approx.	kg	10.000	10.000

*S = rod sided, K = piston sided*

*Performance data is max. theoretical*

*(Max. output and max. pressure cannot be achieved simultaneously.)*



## TECHNICAL DATA

		SP 8800	
Type		D-180 x 2000	E-180 x 2000
Performance		S / K	S / K
Output	m <sup>3</sup> /h	94 / 63	91 / 60
Pressure	bar	156 / 243	156 / 243
Strokes	/min	31 / 21	31 / 21
Installed output	kW	440	2 x 200
Weight, approx.	kg	10.000	10.000

*S = rod sided, K = piston sided*

*Performance data is max. theoretical*

*(Max. output and max. pressure cannot be achieved simultaneously.)*



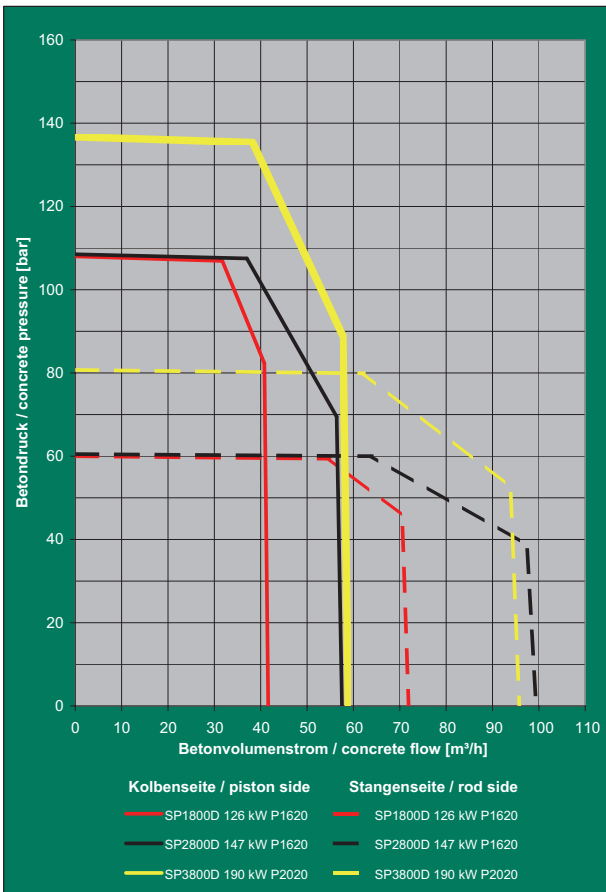
## TECHNICAL DATA

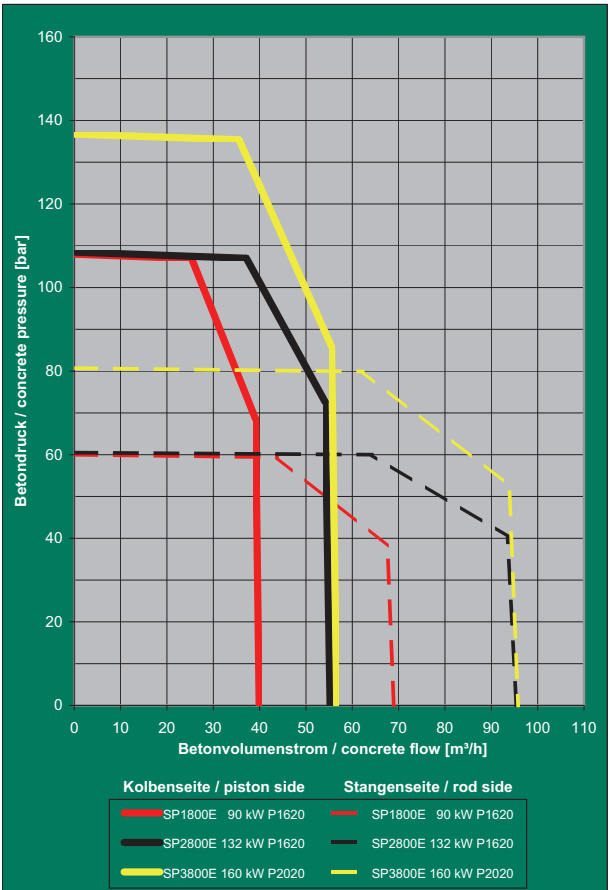
		SP 8800	
Type		D-200 x 2000	E-200 x 2000
Performance		S / K	S / K
Output	m <sup>3</sup> /h	116 / 77	112 / 74
Pressure	bar	104 / 163	104 / 163
Strokes	/min	31 / 21	30 / 20
Installed output	kW	440	2 x 200
Weight, approx.	kg	10.000	10.000

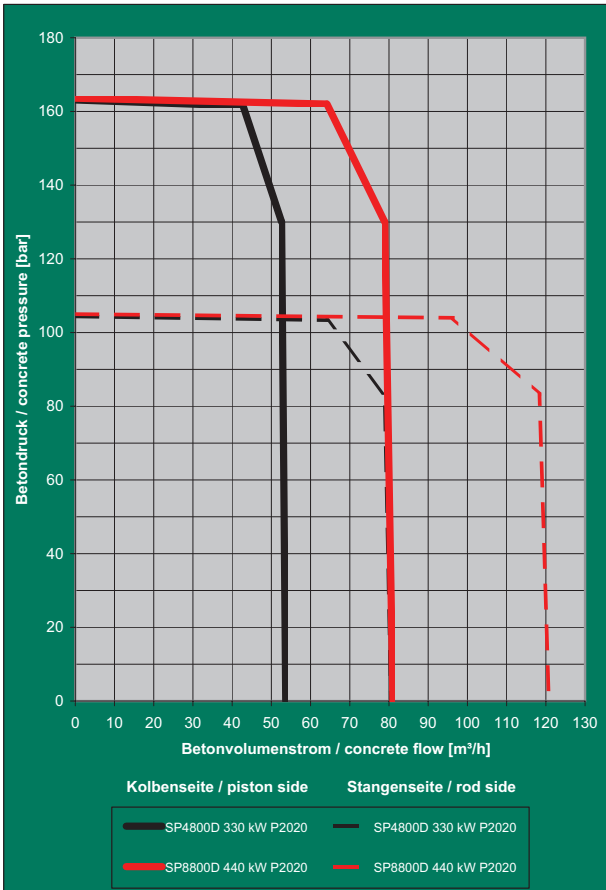
*S = rod sided, K = piston sided*

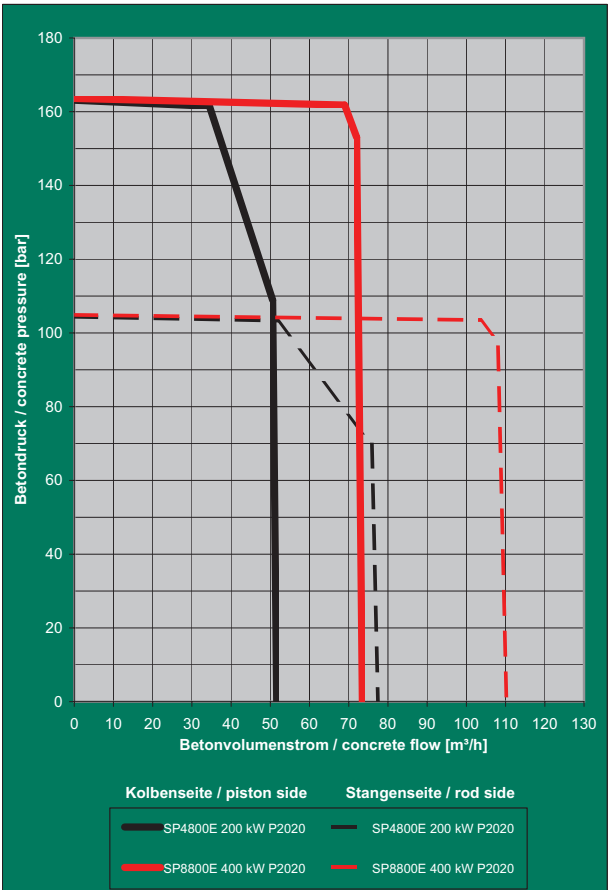
*Performance data is max. theoretical*

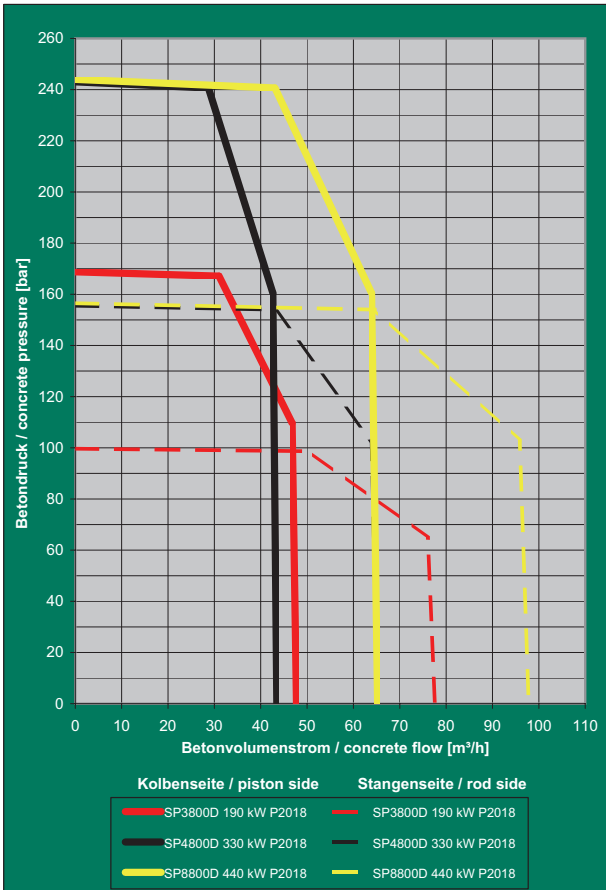
*(Max. output and max. pressure cannot be achieved simultaneously.)*

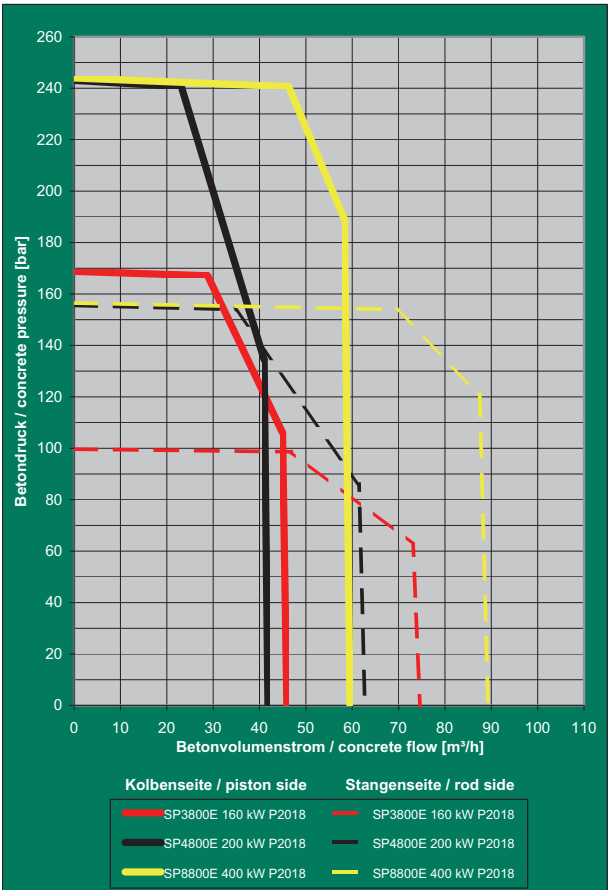










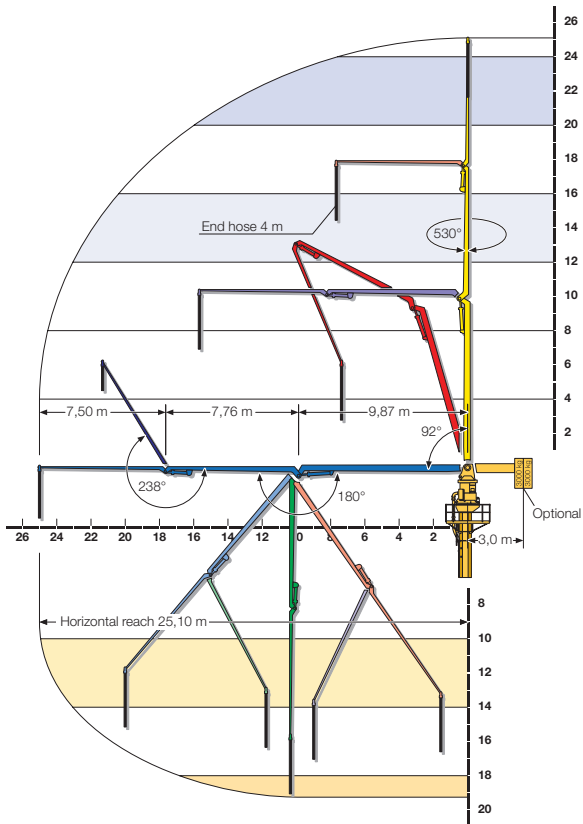




## TECHNICAL DATA

Type	SPB 25	
Horizontal reach	m	25
Number of arms		3
Pipeline dia.	DN	125
End hose	m	4
Weight	kg	5,500
Optional split boom		yes
Optional counterweight	kg	6.000
max. free-standing height on octo-column (w.o. c/wt)	m	20

# SEPARATE PLACING BOOM SPB 25

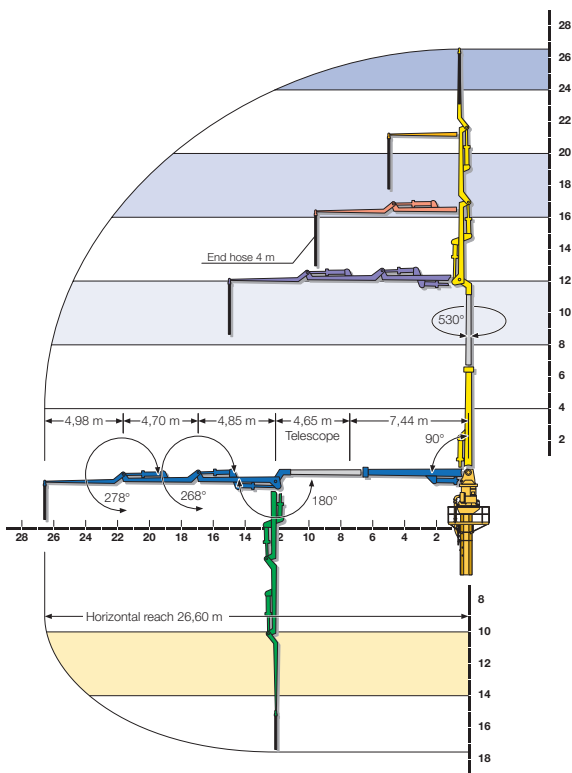




## TECHNICAL DATA

Type	SPB 27 T	
Horizontal reach	m	27
Number of arms		4
Pipeline dia.	DN	125
End hose	m	4
Weight	kg	8.500
Split boom		No
Optional counterweight	kg	-
max. free-standing height on octo-column (w.o. c/wt)	m	18

# SEPARATE PLACING BOOM SPB 27 T

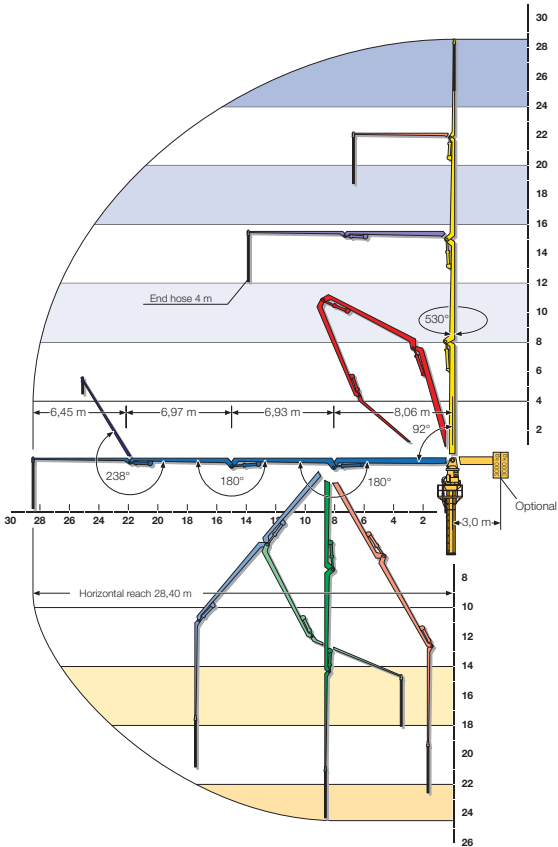




## TECHNICAL DATA

Type	SPB 28	
Horizontal reach	m	28
Number of arms		4
Pipeline dia.	DN	125
End hose	m	4
Weight	kg	6.380
Split boom		Yes
Optional counterweight	kg	6.000
max. free-standing height on octo-column (w.o. c/wt)	m	20

# SEPARATE PLACING BOOM SPB 28

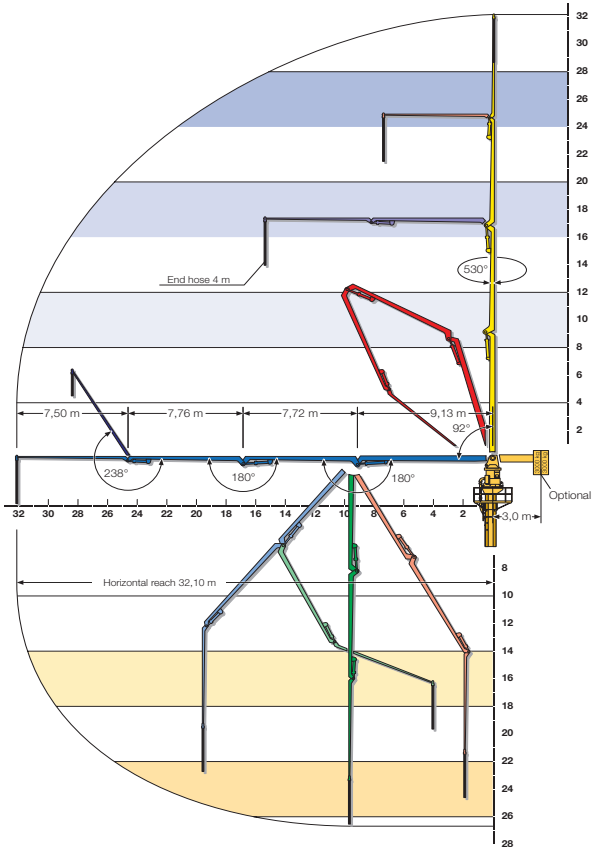




## TECHNICAL DATA

Type	SPB 32	
Horizontal reach	m	32
Number of arms		4
Pipeline dia.	DN	125
End hose	m	4
Weight	kg	7.100
Split boom		Yes
Optional counterweight	kg	6.000
max. free-standing height on octo-column (w.o. c/wt)	m	18 (without C/wt)
	m	20 (with C/wt)

# SEPARATE PLACING BOOM SPB 32

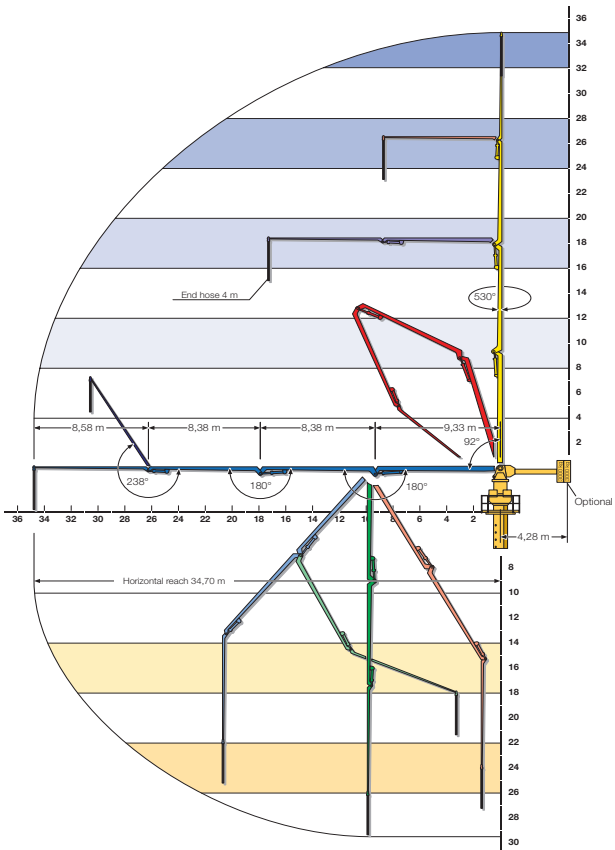




## TECHNICAL DATA

Type	SPB 35	
Horizontal reach	m	35
Number of arms		4
Pipeline dia.	DN	125
End hose	m	4
Weight	kg	8.350
Split boom		Yes
Optional counterweight	kg	6.000
max. free-standing height on octo-column (w.o. c/wt)	m	14 (without C/wt)
	m	20 (with C/wt)

# SEPARATE PLACING BOOM SPB 35









SCHWING GmbH | Heerstraße 9-27 | 44653 Herne | T 02325 987-0 | F 02325 72992 | info@schwing.de | www.schwing.de